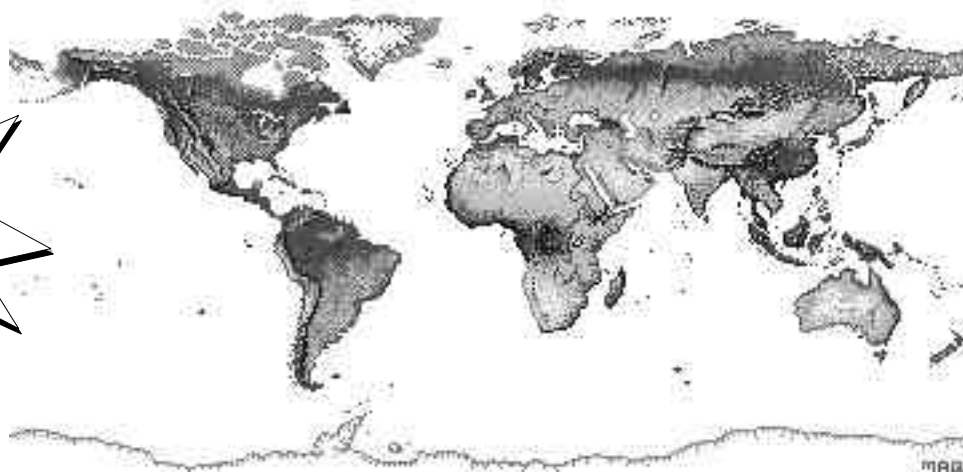


# Mesozoic Fish News

Volume 1, Number 1

February 1, 1994



*Worldwide Networking for Mesozoic Fish Enthusiasts!*

## What Have We Here?

by Mark Wilson

**Y**ou are holding in your hands the first issue of a new informal publication designed to improve communication among people interested in Mesozoic fossil fishes.

The idea for a newsletter about Mesozoic fish arose during the Eichstätt symposium this August, and was first voiced (to my knowledge) by Sue Turner. As most of us know, Sue edits a newsletter called "*Ichthyolith Issues*" for those interested in Paleozoic microvertebrate fossils. That newsletter has been very helpful in keeping Paleozoic fish workers in touch with each other.

Of course, many ichthyolith types also participate in IGCP 328 - "Paleozoic Microvertebrates," part of UNESCO's International Geological Correlation Program. Paleozoic folks can attend the regular meetings of IGCP 328, and the Early Vertebrates meetings such as the one in Miguasha in 1990 and the upcoming one in Paris in 1995.

*("What' Have We Here?" continued on page 2)*

## Name the Newsletter Contest

by Mark Wilson

**P**erhaps you will agree with me that the name of this newsletter is very dull. That's because the name was never intended to be the final name for the publication, just a temporary place-holder until the final name is chosen.

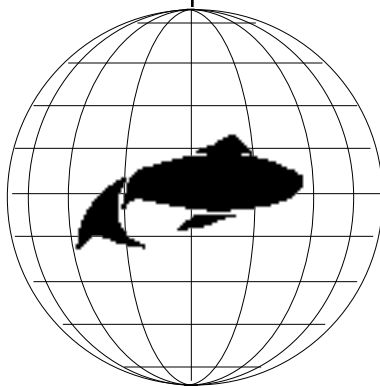
The final name will be chosen (by a small panel of unbiased observers) from among the suggestions received from you, the readers. Guidelines:

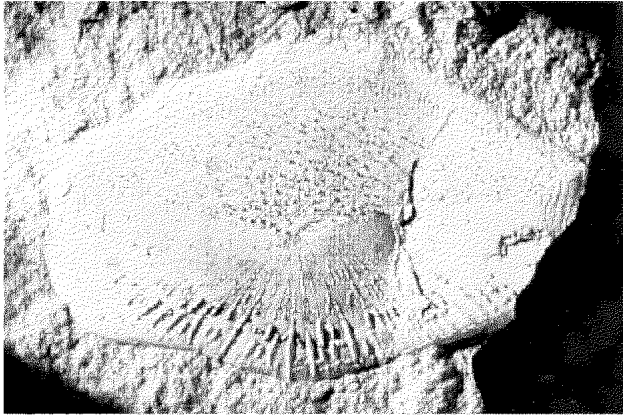
- the name should be ideally 20 characters or less in length
- it should be in good taste!
- it can include English, French, German, Spanish, or Italian words (limitations of my computer system).

All decent names submitted will be published in the next issue of the newsletter (so that you can disagree with the choice of the judging panel if you want). The winner will:

- have her/his name featured in the newsletter
- have her/his creation "immortalized" (for as long as the newsletter lasts).

Use email or another method to send your suggestion today. Deadline: March 30/94. ■





*Turonian ichthyodectid scale from the Kanguk Formation, Banks Island, Canada.*

*("What Have We Here?" continued from page 1)*

Until now, Mesozoic fish workers have had no such mechanism. The meetings in Eichstätt provided a model for possible future meetings. Whether we meet regularly or not, we can also keep in contact through the newsletter.

I will try to keep the process as simple as possible (for me), the newsletter to a small, manageable size, and production to about twice a year. The basic means of keeping it simple is to use desktop publishing software and to ask for electronic sub-

missions insofar as possible.

With desktop publishing it will be possible to include some original or public domain artwork (copyright problems exist with most published figures) provided that it can be imported or scanned in. Currently, the acceptable formats for importing are TIFF (for bit-maps), PICT (bit-map and/or object-oriented), and EPS. Most graphics files from other computer systems can be saved in a format compatible with one of these. If not, submit a paper copy of the graphic for scanning at this end.

Text submissions (e.g. news from readers, announcements) are even easier. They can be sent to me via electronic mail (the preferred method, as it is virtually free) or submitted on a disk (especially useful for graphics files, which can be pretty large). Macintosh and DOS DD (800K) and HD (1.4 Meg) formats are acceptable for disk submissions. If sending a disk file, save it as ASCII or as a Microsoft Word or RTF file on the DOS disks, or as TEXT, Microsoft Word, RTF, or WriteNow! files on Macintosh disks. As a last resort, send paper copy by FAX or regular mail,

*("What' Have We Here?" continued on page 3)*

## Fish Tales:

### News from Readers

**Arratia, Gloria**, Museum of Natural History, University of Kansas, Lawrence, Kansas 66045-2454, U.S.A.

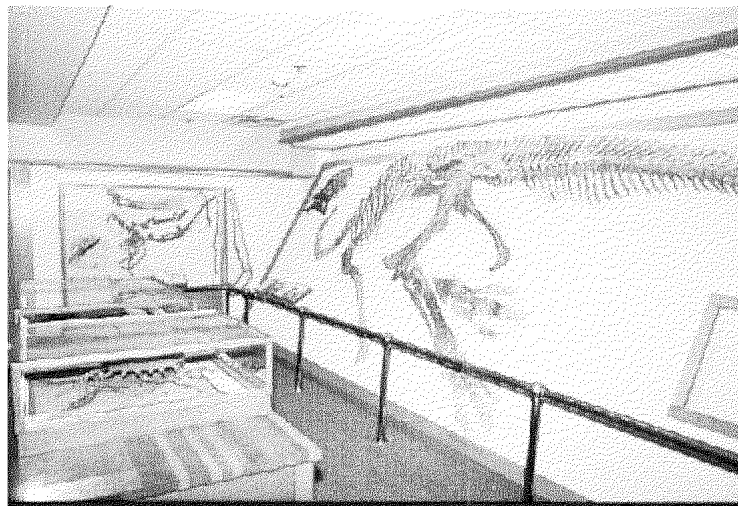
*Phone:* (913) 864-3279 or 843-4107

*Fax:* (913) 864 5335

Starting September 1st, same address as H.-P. Schultze

*Current research:* 1) study of phylogenetic relationships among teleostean lineages using both fossil and Recent fishes; 2) finishing illustrations of monograph on new fishes from the Jurassic of Bavaria; 3) description of new Jurassic fishes from Chile and their relationships. 4) a few projects on Recent fishes. 5) editing the Proceedings of the International Meeting "Mesozoic Fishes - Systematics and Paleocology" and the special volume "Contribution of Southern South America to Vertebrate Paleontology."

**Brito, Paulo M.**, Laboratoire de Paléontologie,



*View of Cretaceous Fossils in the Paleontology Museum at the University of Alberta*

Museum national d'Histoire naturelle, 8 rue Buffon, 75005, Paris, France

*Phone:* (1) 40793003 or (1) 40793048

*Fax:* (1) 40793580

*Current research:* 1) revision of Mesozoic Aspidorhynchiformes: osteology and phylogeny; 2)

*(See "Fish Tales": continued on page 4)*

(*"What Have We Here?" continued from page 2*)

keeping in mind that it will have to be retyped.

Make all submissions short: maximum length for news items is 100 words. Announcements should be even shorter (50 words, e.g. the address announcement below). Longer items will be edited or omitted.

More details on submission of copy for the newsletter appear below, including my electronic mail and FAX addresses. One of the first things we want to receive from you is your entry in the name contest.

To get the ball rolling, we have included a few announcements in this issue as examples. So, get your entries and submissions in! A list of suggested topics suitable for submission appears on page 4. ■

**I**s your address correct? Would you like to be included in the mailing list? Send us an email message or mail us a post-card with your name, address, email address, FAX and telephone numbers, and research area. The mailing list we used was the one for the Eichstätt conference.

### Send submissions to:

- electronic mail:

Mark\_Wilson@biology.ualberta.ca

- FAX:

Dr. M. V. H. Wilson  
1-403-492-9234

- regular mail:

Dr. M. V. H. Wilson  
Department of Zoology  
University of Alberta  
Edmonton, Alberta T6G 2E9  
CANADA

# ASIH 1995 Edmonton Alberta Canada

Combine attendance at the  
75th Annual Meetings of the

## American Society of Ichthyologists and Herpetologists

June 15-19, 1995

with visits to:

- Paleontology Museum & Collections, University of Alberta
- West Edmonton Mall
- Royal Tyrrell Museum of Palaeontology (in Drumheller)
- Banff and Jasper National Parks and the Canadian Rockies

*See you here!*

*Thanks to all the organizers of the conference and field trips for making our participation so enjoyable.*



## Here are some examples of items suitable for the newsletter:

- news from your lab
- meeting announcements
- small photos of problematical fossils that someone else might be able to identify
- employment and graduate school opportunities available or needed
- publications (last two years, not previously listed)
- address changes

Remember, keep items short (less than 100 words). Long items will be edited or omitted.

(“Fish Tales”: continued from page 2)

systematics of gars and semionotids with S. Wenz; 3) microvertebrates of Mesozoic of Brazil with R. Bertini, D. Martill, and L. Salles; 4) revision of Mesozoic rhynobatiforms with L. Salles.

**Case, Gerard R.**, P.O. Box 689, Ridgefield Park, New Jersey 07660-0689, U.S.A.

Phones: (201) 963-1443 (res.); (201) 646-2856 or 3106 (bus.)

*Current research:* work on selachians (sharks, skates, rays, sawfishes and chimaeroids).

**Fielitz, Christopher**, Museum of Natural History, University of Kansas, Lawrence, Kansas 66045-2454, U.S.A.

Phone: (913) 864-3865

E-mail: FIELITZ@kuhub.cc.ukans.edu

*Current research:* 1) interrelationships among the species of the genus *Enchodus*; 2) interrelationships among the various Cretaceous salmoniform fishes (with Gloria Arratia); 3) an investigation of the decay of freshwater fishes in the lacustrine setting using experimental lakes and ponds (with Caroline Rinaldi).

**Gayet, Mireille**, Centre des Sciences de la Terre, Université Claude Bernard, Lyon I 27-43 bd du 11 novembre, 69622 Villeurbanne cedex, France

Phone: 72 44 83 98

Fax: 72 44 84 36

*Current research:* 1) study of new Lower Cretaceous teleosts (“leptolepids”) from Israel; 2) monograph on the catfishes from Cretaceous/Paleocene of Bolivia; 3) study on fossil and recent Polypteriformes (with François J. Meunier); 4) study of Cretaceous/Paleocene palaeoenvironments of Bolivia.

**Goto, Masatoshi**, Department of Anatomy, School of Dental Medicine, Tsurumi University, 2-1-3 Tsurumi, Tsurumi-ku, Yokohama, Japan 230

Phone: 045-581-1001, ext. 349

Fax: 045-573-9599

*Current research:* 1) biostratigraphical, taxonomical, morphological, histological, developmental and evolutionary studies on shark teeth; 2) origin and evolution of vertebrate hard tissues; 3) comparative morphology, histology and development of vertebrate teeth.

**Gottfried, Michael D.**, Calvert Marine Museum, P.O. Box 97, Solomons MD 20688, U.S.A.

Phone: (410) 326-2042

Fax: (410) 326-6691

*Current research:* 1) Late Cretaceous fishes from Madagascar (with David Krause); 2) Miocene marine vertebrates from the mid-Atlantic region (particularly fossil white sharks); 3) palaeoniscoid-grade actinopt.

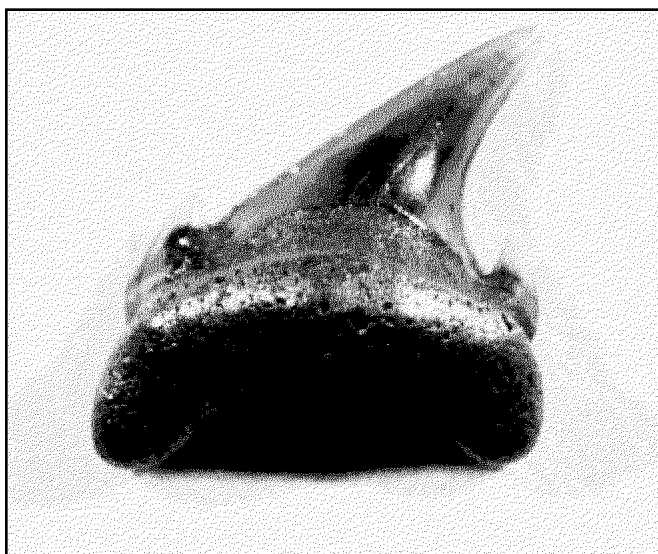
**Jin, F.**, Institute of Vertebrate Paleontology and Paleoanthropology, Academia Sinica, P.O. Box 643, Beijing 100044, PRC

Phone: (861) 8355511, ext. 427

Fax: (861) 831 2683

*Current research:* 1) study of Late Jurassic and Early Cretaceous fish fauna from northern China; 2)

(See “Fish Tales”: continued on page 5)



*Tooth from undescribed Turonian chondrichthyan fauna at Watino, Alberta, Canada.*

(“Fish Tales”: continued from page 4)

osteology and phylogenetic relationships of Mesozoic acipenseriforms in China; 3) review of Cretaceous fishes from Zhejiang and their implication on zoogeography.

**Kirkland, James I.**, Dinamation International Society, P.O. Box 307, Fruita, Colorado 81521, U.S.A.

Phone: (303) 858-7282

Fax: (303) 858-3532

*Current research:* 1) study of Mesozoic freshwater fish faunas from western North America; 2) Cretaceous marine and freshwater elasmobranchs.

**Li, Guo-qing**, Dept. of Zoology (Dept. Biological Sciences after July 1), University of Alberta, Edmonton, Alberta T6G 2E9 Canada.

*Permanent address:* IVPP, Chinese Academy of Sciences, P.O. Box 643, Beijing 100044, P.R. China.

Phone: (403) 492-1252

Fax: (403) 492-9234

*Current research:* 1) new osteoglossomorph fishes from the Cretaceous and Tertiary of North America; 2) interrelationships and biogeographic history of fossil and extant osteoglossomorphs; 3) systematic position of †*Phareoides queenslandicus* (submitted); 4) lower Tertiary Tarim elasmobranch fauna (ms submitted).

**Meunier, François J.**, Laboratoire d'Ichtyologie, Museum national d'Histoire naturelle, 43 rue Cuvier, 75231 Paris cedex 05, France

Phone: 40 79 37 61

Fax: 40 79 37 71

*Current research:* 1) comparative histology of bony tissues in extant Osteichthyes; 2) structure of scales in extant Teleostei; 3) phylogeny of scales in the actinopterygian lineage including extinct species. I would be appreciative if someone could send to me fossil scales (or ground sections, if you have some) belonging to well defined species, for use in my comparative studies.

**Micklich, Norbert**, Department of Geology, Paleontology & Mineralogy, Hessisches Landesmuseum Darmstadt, Friedensplatz 1, D-64283 Darmstadt, Germany

Phone: [49] (06151) 165742

Fax: [49] (06151) 28942

*Current research:* 1) MFRP (Messel Fish Research Project): systematics, paleoecology, phylogenetic relationships of Middle Eocene gars, thau-maturids, percoids; 2) percoids of Green River Formation; 3) TFSRP (Tethys Sea Fish Research Project): international joint research project

between scientists of Russian Academy of Sciences, Moscow, and European Community Member States.

**Murray, Alison M.**, Dept. of Zoology (Dept. Biological Sciences after July 1), University of Alberta, Edmonton, Alberta T6G 2E9 Canada

Phone: (403) 492-1179

Fax: (403) 492-9234

E-mail: useramur@mts.ucs.ualberta.ca

Address after 1 Sept 94: Ichthyology Section, Macoun Nature Centre, Canadian Museum of Nature, P.O. Box 3443, Station D, Ottawa, Ontario K1P 6P4 Canada; Phone: (819) 953-6263, Fax: (819) 953-6220

*Current research:* 1) relationships of Tertiary and Recent percopsiform fishes; 2) Cretaceous *Sphenocephalus* and a newly described sphenocephalid from the Cretaceous of Alberta; 3) Cretaceous acanthomorphs as outgroups for phylogenetic analysis.

**Neuman, Andrew**, Manager of Collections, Royal Tyrrell Museum of Palaeontology, Box 7500, Drumheller, Alberta, T0J 0Y0, Canada

Phone: (403) 823-7707

Fax: (403) 823-7131

*Current research:* 1) Lower Triassic fishes from Wapiti Lake and other areas of western Canada; 2) continued work on an update of the *Catalogue of Canadian Fossil Fishes*; 3) work on Upper Cretaceous freshwater fishes from western Canada, in collaboration with Mark Wilson and Don Brinkman; 4) planned fieldwork in the Devonian of the Canadian Arctic for summer, 1994; 5) contributing a chapter on Triassic fishes to a book on British Columbia fossils.

**Poyato-Ariza, Francisco J.**, Museum of Natural History (Vertebrate Paleontology), University of Kansas, Lawrence, Kansas 66045-2454, U.S.A.

Phone: (913) 864-3216

Fax: (913) 864-5335

*Current research:* 1) description of new chanids (Ostariophysi, Gonorynchiformes) from the Early Cretaceous of Spain; Revision of the family Chanidae, including both fossil and living forms; 2) relationships of the order Gonorynchiformes (Ostariophysi) including both fossil and living forms; 3) description of new elopiforms (Teleostei, Elopomorpha) from the Early Cretaceous of Spain and the Late Jurassic of France; 4) study of sexual dimorphism in *Rubiesichthys gregalis* (Ostariophysi, Chanidae), from the Early Cretaceous of Spain; 5) composition, diagnosis and relationships of order Elopiformes (Teleostei,

(See “Fish Tales”: continued on page 6)

("Fish Tales": continued from page 5)

Elopomorpha), including both fossil and living forms; 6) description and relationships of a new ichthyofauna (previously considered as "leptol-epids") from the Early Cretaceous of Spain.

**Schultze, Hans-Peter**, Dept. of Systematics & Ecology and Museum of Natural History, The University of Kansas, Lawrence, Kansas 66045-2106, U.S.A.

Phone: (913) 864-4427

Fax: (913) 864-5335 or 5321

E-mail: CURATOR@UKANVM

After 1 July 1994: Paläontologisch-Geologisches Institut und Museum, Museum für Naturkunde der Humboldt-Universität, Invalidenstr. 43, D-10115 Berlin, Germany.

Fax: 49-30-28972561

*Current research:* aside from studies of Paleozoic fishes, I have just finished a paper on scales of Mesozoic (and Recent) actinopterygians. In spring 1994, Gloria Arratia and I will collect Jurassic fishes in Chile with National Geographic Society support.

**Shen, Mei**, Museum of Paleontology, University of Michigan, Ann Arbor, Michigan 48109-1079, U.S.A.

Phone: (313) 763-9373

Fax: (313) 936-1380

*Current research:* 1) the phylogeny of basal teleosts; 2) the phylogeny of some Chinese Mesozoic fishes.

**Sorbini, Lorenzo**, Museo Civico di Storia Naturale di Verona, 37100 Verona, Italy

Phone: 39-45-8079401

Fax: 39-45-8035639

*Current research:* 1) study on some Upper Cretaceous and Paleocene acanthomorphs; 2) ecology of Bolca fishes.

**Su, De-zao**, Institute of Vertebrate Paleontology and Paleoanthropology, Academia Sinica, P.O. Box 643, Beijing, 100044, PRC

*Current research:* 1) study of new Lower Jurassic actinopterygian fishes from Weixin, Yunnan Prov.; 2) study of new Jurassic holostean fish from Sichuan Prov.

**Taverne, Louis P.**, University of Burundi, Faculty of Sciences, Department of Biology, P.O. Box 2700, Bujumbura, Burundi (Africa)

Phone: 225556

*Current research:* 1) study of the ichthyofauna of the Malagarazi basin; 2) revision of some Mesozoic teleosts of the Euro-african Mesogea; 3) study of some osteoglossomorph teleosts from the

marine Eocene of Monte Bolca; 4) preparation of a monograph on priacanthid teleosts from the marine Eocene of Belgium.

**Tintori, Andrea**, Dipartimento di Scienze della Terra, Via Mangiagalli 34, I-20133 Milano, Italy

Phone: 39-23698202

Fax: 39-70638261

*Current research:* 1) the Norian fauna from northern Italy and geologically related areas; 2) Ladinian and Carnian faunas from northern Italy; 3) collections in many new Cretaceous localities in northeastern Italy.

**Tyler, James C.**, National Museum of Natural History, Smithsonian Institution (MRC-106), Washington, D.C. 20560, U.S.A.

Phone: (202) 786-2662

Fax: (202) 357-4779

E-mail: mnhod027@sivm.si.edu

*Current research:* research on Upper Cretaceous and Eocene tetradontiforms, acanthur-oids and zeiforms.

**Williams, Robert R. G.**, Dept. of Zoology (Dept. Biological Sciences after July 1), University of Alberta, Edmonton, Alberta T6G 2E9 Canada

Permanent address: Apt. 27, 3115-119 St.,

Edmonton, Alberta, T6J 5N5 Canada.

Phone: (403) 492-5408 or 436-1082

Fax: (403) 492-9234

*Current research:* 1) redescription and phylogenetic position of †*Platacodon nanus* Marsh, Late Cretaceous of North America. 2) jaw muscles, suspensorium, and phylogeny of Aplochitonidae, Galaxiidae, *Lepidogalaxias*, and Osmeridae.

**Wilson, Mark V. H.**, Dept. of Zoology (Dept. Biological Sciences after July 1), University of Alberta, Edmonton, Alberta T6G 2E9 Canada

Phone: (403) 492-5408

Fax: (403) 492-9234

E-mail: mark\_wilson@biology.ualberta.ca

*Current research:* 1) Cretaceous marine fishes of the Fish Scale Zone, Albian-Cenomanian boundary; 2) Late Cretaceous freshwater fishes of western North America; 3) redescription and systematic position of †*Platacodon nanus* Marsh. ■

## So your news isn't listed?

That's probably because we didn't receive it. With e-mail submissions now possible, you no longer have much excuse. Besides, we'd like to know your current research activities, your phone and fax numbers, and your regular and e-mail addresses.

# Fisch Fiche:

## Recent Publications

- Bannikov, A. F., & Tyler, J. C. 1992.** *Caprovesposus* from the Oligocene of Russia - the pelagic *acronurus* presettlement stage of a surgeonfish (Teleostei, Acanthuridae). Biol. Soc. of Wash., Proc., **105**: 810-820.
- & — **1993.** Phylogenetic revision of fishes of families Luvaridae and Kishlukiiidae (Acanthuroidei), with new genus and species of Eocene luvarids. Smithsonian Contr. Paleobiol.
- & — **In press.** Revision of the Eocene fish family Exelliidae. Paleontol. J.
- Bertini, R., Marshall, L. G., Gayet, M., & Brito, P. 1993.** Vertebrate fauna from the Adamantina and Marília formations (Upper Bauru Group, late Cretaceous, Brazil) in their stratigraphic and paleobiogeographic context. N. Jb. Geol. Paläont., Abh., **188**: 71-101.
- Brilo, P.M. 1992.** L'endocrane et la moulage endocranienne de *Vinctifer comptoni* (Actinopterygii - Aspidorhynchiformes) du Crétacé inférieur du Brésil. Ann. de Paleont. (Vért.-Invert.), **78**: 129-157.
- Brilo, I.M., Bertini, R.J., & Brito, P.M. 1992a.** Sobre os Fosseis da Formação Santana (Crétáceo inferior da Bacia do Araripe) e a questão de seus posicionamentos estratigráficos. In 2º Simpósio sobre as Bacias Cretácicas Brasileiras, UNESP: 76-80.
- , — & — **1992b.** Os Vertebrados Cretácicos brasileiros: Levantamento preliminar. In 2nd Simpósio sobre as Bacias Cretácicas Brasileiras, UNESP: 99-101.
- Brilo, P.M. & B. Seret. In press.** The new genus *Iansan* (Chondrychthyes, Rhinobatoidea) from the Lower Cretaceous of Brazil and its phylogenetic relationships. In: Proc. Sympos. Mesozoic Fishes - Systematics and Paleoecology. Edited by G. Arratia and G. Viohl.
- Case, G. R. 1992.** *A Pictorial Guide to Fossils.* reprint ed. Krieger Publ. Co., Melbourne, Florida.
- **In press-a.** Fossil fish remains from the late Paleocene Tuscahoma and early Eocene Bashi Formations of Meridian, Lauderdale County, Mississippi. Part I: Selachians.
- **In press-b.** Fossil fish remains from the late Paleocene Tuscahoma and early Eocene Bashi Formations of Meridian, Lauderdale County, Mississippi. Part II: Teleosteans.
- Case, G. R., and Schwimmer, D. R. 1992.** Occurrence of the chimaeroid *Ischyodus bifurcatus* Case in the Cusseta Formation (Upper Cretaceous, Campanian) of western Georgia and its distribution. J. Paleontol., **66**: 347-350.
- Fielitz, C., & Bardack, D. 1992.** *Deltaichthys albuloides*, a new and unusually preserved albulid (Teleostei) probably from the Cretaceous of Texas. J. Vert. Paleo., **12**: 133-141.
- Gayet, M. 1993.** Nouveau genre de Gonorhynchidae du Cénomanién inférieur marin de Hakei (Liban). Implications phylogénétiques. C. R. Acad. Sci., Paris, **316**: 257-264.
- **1993-a.** Gonorhynchoidei du Crétacé supérieur marin du Liban et relations phylogénétiques des Charitosomidae nov. fam. Doc. Lab. géol. Lyon, **126**: 128 pp.
- **1993-b.** Relations phylogénétiques des Gonorhynchiformes. Belg. J. Zool., **123**: 223-249.
- Gayet, M., Cappetta, H., Jaillard, E., & Lévy, A. 1993.** La présence de fossiles marins dans le Crétacé terminal des Andes centrales et ses conséquences paléogéographiques. Palaeogeogr., Palaeoecol., Palaeoclimat., **102**: 283-319.
- Gayet, M., Rage, J.-Cl., Sempéré, T., & Gagnier, P.-Y. 1992.** Modalités des échanges de Vertébrés continentaux entre l'Amérique du Nord et l'Amérique du Sud au Crétacé supérieur et au Paléocène. Bull. Soc. géol. Fr., Paris, **163**.
- Gayet, M., & Meunier, F. J. 1991a.** First discovery of Polypteridae (Pisces, Cladistia, Polypteriformes) outside of Africa. Géobios, **24**: 463-466.
- & — **1991b.** Polypteridae (Pisces, Cladistia, Polypteriformes) from the late Cretaceous and early Paleocene of Bolivia. In *Fosiles y facies de Bolivia, Vol. I Vertebrados.* Edited by R. Suarez-Soruco. Revista Técnica de YPF, **12**: 495-4948.
- & — **1991c.** Première découverte de Gymnotiformes fossiles (Pisces, Ostariophysi) dans le Miocène supérieur de Bolivie. C. R. Acad. Sci., **313**: 471-476.
- & — **1992.** Polyptéridiformes (Pisces, Cladistia) du

(“Fisch Fiche”: continued from page 7)

Maastrichtien et du Paléocène de Bolivie. Géobios, mém. sp., **14**: 159-168.

— & — **1993**. Conséquences paléobiogéographiques et biostratigraphiques de l'identification d'écailles ganoïdes du Crétacé supérieur et du Tertiaire inférieur d'Amérique du Sud. Docum. Lab. Géol. Lyon, **125**: 169-185.

**Gayet, M., Sempere, T., & Cappetta, H. 1992**. A propos de l'environnement marin restreint du bassin centro-Andin au Maastrichtien. C. r. Acad. Sci., Paris, **496**: 223-228.

**Goto, M. 1993a**. Origin and evolution of skeletal tissues in vertebrates. In *Structure, Formation and Evolution of Fossil Hard Tissues*. Edited by I. Kobayashi. Tokai Univ. Press, Tokyo, pp. 101-106.

— **1993b**. Origin and evolution of the hard tissues of fish scales and teeth. Marine Sci. Monthly, **25**: 628-637.

**Goto, M., Kuga, N., & Hachiya, K. 1991**. On the hyodont elasmobranch teeth of three genera from the Mesozoic of Japan. J. Geol. Soc. Japan, **97**: 743-750.

**Goto, M., Uyeno, T., & Yabumoto, Y. In press**. Mesozoic elasmobranch remains from Japan. In: *Proc. Sympos. Mesozoic Fishes - Systematics and Paleocology*. Edited by G. Arratia and G. Viohl.

**Grande, L., & Micklich, N. 1993**. Paleobiogeography of the Messel and Geiseltal fish faunas. *Kaupia*, **2**: 245-255.

**Holman, J. A., & Case, G. R. 1992**. A puzzling new snake (Reptilia: Serpentes) from the late Paleocene of Mississippi. *Ann. Carnegie Mus.*, **61**: 197-205.

**Leckie, D. A., Singh, C., Bloch, J., Wilson, M. V. H., & Wall, J. 1992**. An anoxic event at the Albian-Cenomanian boundary: the fish scale marker bed, northern Alberta, Canada. *Palaeogeogr., Palaeoclimatol., Palaeoecol.*, **92**: 139-166.

**Li, Guo-Qing, In press**. †*Cretophareodus*, a Late Cretaceous osteoglossid (Teleostei) from the Oldman Formation of Alberta, Canada, and its phylogenetic relationships. *Proc. Sympos. Mesozoic Fishes - Systematics and Paleocology*, Edited by G. Arratia and G. Viohl.

**Li, Guo-Qing, & Wilson, M. V. H. In press**. A new species of *Hiodon* from the Eocene of Montana, with notes on the evolution of the postcranial skeleton in Hiodontidae (Teleostei). *J. Vert. Paleontol.*

**Marshall, L. G., Sempere, T., & Gayet, M. 1993**. The

Pecata (Late Oligocene-Middle Miocene) and Yecua (Late Miocene) formations of the subandean basin. *Doc. Lab. géol Lyon*, **125**: 291-301.

**Meunier, F. J., & François, Y. 1992a**. Croissance du squelette chez les Téléostéens. I. Squelette, os, tissus squelettiques. *Ann. Biol.*, **31**: 169-184.

— & — **1992b**. Croissance du squelette chez les Téléostéens. II. La croissance du squelette. *Ann. Biol.*, **31**: 185-219.

**Meunier, F. J., & Gayet, M. 1991**. Premier cas de morphogenèse réparatrice de l'endosquelette caudal d'un poisson Gymnotiforme du Miocène supérieur Bolivien. *Géobios mém sp.*, **13**: 223-230.

— & — **1993**. A peculiar Polypteriform from the late Cretaceous/early Paleocene of South America. In: *Proc. Sympos. Mesozoic Fishes - Systematics and Paleocology*. Edited by G. Arratia and G. Viohl.

**Meunier, F. J., & Huysseune, A. 1992**. The concept of bone tissue in Osteichthyes. *Nether. J. Zool.*, **42**: 445-458.

**Micklich, N. 1992a**. Neuerung bei den Messel-Grabungen. Bestimmungsschlüssel und Referenzsammlung für Messel-Fische. *Informationen a.d. Hess. L.-Mus. Darmstadt*, **1/92**: 29-38.

— **1992b**. Ancient knights-in-armor and modern cannibals. In: *Messel: An Insight into the History of Life and of the Earth*. Edited by S. Schaal and W. Ziegler. Clarendon Press, Oxford, pp. 69-91.

— **1993a**. Notgrabungen im Steinbruch “Am Katzenresch” bei Dexheim: ein Pilotprojekt. *Informationen a.d. Hess. L.-Mus. Darmstadt*, **1/93**: 48-51.

— **1993b**. Nordamerikanische Barsche. *Informationen a.d. Hess. L.-Mus. Darmstadt*, **1/93**: 51-53.

— **1993c**. Paläogene und Neogene Fische der Tethys. *Informationen a.d. Hess. L.-Mus. Darmstadt*, **2/93**: 30-31.

**Okura, M., & Goto, M. 1992**. First discovery of placodermi remains in Japan. *Earth Sci.*, **46**: 265-274.

**Poyato-Ariza, A. J., & Buscalioni, A. D. 1992**. Sondeo en la opinión pública sobre Paleontología y Evolución. *Paleontología y Sociedad, Act. Ses. Monogr. VI Jorn. Paleont.*

**Poyato-Ariza, F. J. 1992**. Introducción al estudio de los peces fósiles: problemas recientes en taxonomía. In:

(“Fisch Fiche”: continued on page 9)



("Fisch Fiche": continued from page 8)

*Paleontología de Vertebrados. Faunas y Filogenia, Aplicación y Sociedad. Edited by H. Astibia. Servicio Edit. Univ. País Vasco, Bilbao, Spain, pp. 75-152.*

— **In press-a.** A new Early Cretaceous gonorynchiform fish (Teleostei: Ostariophysi) from Las Hoyas (Cuenca, Spain). *Occ. Pap. Mus. Nat. Hist., Univ. Kansas*, **164**.

— **In press-b.** The phylogenetic position of *Rubiesichthys gregalis* and *Gordichthys conguensis* (Teleostei, Ostariophysi), from the Early Cretaceous of Spain. *In: Mesozoic Fishes: Systematics and Paleoecology. Edited by G. Arratia and G. Viohl.*

— **In press-c.** A revision of *Rubiesichthys gregalis* Wenz 1984 (Ostariophysi, Chanidae), from the Early Cretaceous of Spain. *In: Mesozoic Fishes: Systematics and Paleoecology. Edited by G. Arratia and G. Viohl.*

**Poyato-Ariza, F. J., & Wenz, S. In press.** *Naiathaelon okkidion* n.g., n. sp. (Teleostei, Elopomorpha) from the Lower Tithonian of Canjuers (Var, France). *Géobios*, mém sp.

**Shen, M., Jin, F., & Zhang, J.-Y. 1991.** The interrelationships of Huashiidae (Teleostei) and its implication on systematics. *Vert. PalAs.*, **29**: 245-263.

**Sorbini, L., & Landini, W. 1993.** Composizione qualitativa e distribuzione spaziale delle comunità ittiche di alcuni ambienti recifali dei Cayos di Chichiriviche e dell'isola dos Moquises Sur (Venezuela). *Boll. Mus. Civ. St. Nat. Verona*, **17**: 541-562.

— & — **In press.** Biogeographic and palaeoclimatic relationships of the Middle Pliocene ichthyofauna of the Samoggia Torrent (Bologna). *Palaeogeogr., Palaeoclimatol., Palaeoecol.*

**Sorbini, L., & Roveri, M. 1992.** Documentazione sedimentologica e paleontologica di un evento anossico mediopliocenico. *Giornale di Geologia*, **54**: 37-53.

**Sorbini, L., & Landini, W. 1992.** Données récentes sur les ichthyofaunes du Miocène et du Pliocène d'Italie. *Géobios*, **14**: 151-157.

**Su, D.Z. 1992.** On teleostean fossils from Nieerku Formation of eastern Liaoning and the generic status of *Lycoptera longicephalus*. *Vert. PalAsiat.*, **30**: 54-70.

— **1993.** New Jurassic ganoid fishes from northwestern Gansu, China. *Vert. PalAsiat.*, **31**: 1-14.

**Taverne, L. 1992.** Révision du genre *Protostomias*, télé-

ostéen stomiiforme crétacique de la Mésogée eurafri-  
caine. *Biol. Jaarb. Dodonaea*, **59**: 57-76.

— **1993.** Révision de *Kermichthys daguini* (Arambourg, 1954) nov. gen., téléostéen salmoniforme du Crétacé de la Mésogée eurafrique. *Biol. Jrb. Dodonaea*, **60**: 76-95.

— **In press-a.** Ostéologie et affinités du téléostéen crétacique *Elopopsis microdon* (Pisces, Crossognathiformes, Pachyrhizodontidae). *Biol. Jaarb. Dodonaea*.

— **In press-b.** Révision de *Paravinciguerrria praecursor* Arambourg, 1954, téléostéen Salmoniforme du Crétacé marin de la Mésogée eurafrique. *Biol. Jaarb. Dodonaea*.

— **In press-c.** Description de l'appareil de Weber du téléostéen crétacique marin *Clupavus maroccanus* et ses implications phylogénétiques. *Belg. Journ. Zool.*

**Tyler, J. C., & Bannikov, A. F. 1992a.** New genus of primitive ocean sunfish with separate premaxillae from the Eocene of southwest Russia (Molidae, Tetraodontiformes). *Copeia*: 1014-1023.

— & — **1992b.** A remarkable new genus of tetraodontiform fish with features of both balistids and ostraciids from the Eocene of Turkmenistan. *Paleobiol.*, **72**: 1-14.

— & — **In press.** A new genus of fossil pufferfish (Tetraodontidae: Tetraodontiformes) based on a new species from the Oligocene of Russia and a referred species from the Miocene of Ukraine. *Biol. Soc. Wash., Proc.*

**Tyler, J. C., Jerzmanska, A., Bannikov, A. F., & Swidnicki, J. 1993.** Two new genera and species of Oligocene spikefishes (Tetraodontiformes: Triacanthodidae), the first fossils of the Hollardiinae and Triacanthodinae. *Smiths. Contr. Paleobiol.*, **75**: 1-27.

**Tyler, J. C., Purdy, R. W., & Oliver, K. H. 1992.** A new species of *Spherooides* pufferfish (Teleostei, Tetraodontidae) with extensive hyperostosis from the Pliocene of North Carolina. *Biol. Soc. Wash., Proc.*, **105**: 462-482.

**Tyler, J. C., & Sorbini, L. In press.** New superfamily and families of tetraodontiform fishes from the Upper Cretaceous: the earliest plectognaths and morphologically primitive sister group of the rest of the order. *Smiths. Contr. Paleobiol.*

**Wenz, S. and Brito, P.M. 1992.** Découverte de Lepisosteidae (Pisces, Actinopterygii) dans le Crétacé

("Fisch Fiche": continued on page 7)

("Fisch Fiche": continued from page 9)

inférieur de la Chapada do Araripe (N-Edu Brésil): systématique et phylogénie. C.R. Acad. Sci. de Paris, **314**: 1519-1525.

**Wenz, S. and P.M. Brito. In press.** New data about the lepisosteids and semionotids from the Early Cretaceous of Brazil and its phylogenetic relationships. *In: Proc. Sympos. Mesozoic Fishes - Systematics and Paleoecology. Edited by G. Arratia and G. Viohl.*

**Wenz, S., Brito, P.M., and Martill, D.M. 1993.** The fish fauna of the Santana Formation concretions. *In Spectacular Fossils of the Santana and Crato Formations N-E Brazil. Edited by A. Jarzembowski. The Paleontological Association, London.*

**Wenz, S., & Poyato, A., F.J. In press.** Les Actinoptérygiens juvéniles du Crétacé inférieur du Montsech et de Las Hoyas (Espagne). Géobios, mém sp. — & — **In press.** Métodos de trabajo en Paleoiictología. Nuevas aportaciones al estudio de la ictiofauna de Las Hoyas. *In: Las Hoyas: un lago de tiempos remotos. Actas III Curso Paleontología. Edited by J. L. Sanz and F. J. Poyato-Ariza. Inst. "Juan de Valdés", Act. Acad.*

**Williamson, T. E., Kirkland, J. I., & Lucas, S. G. 1993.** Selachians from the Greenhorn Cyclothem ("Middle" Cretaceous: Cenomanian-Turonian), Black Mesa, Arizona, and the paleogeographic distribution of Late Cretaceous selachians. *J. Paleontol.*, **67**: 447-474.

**Wilson, M. V. H. 1992.** Importance for phylogeny of single and multiple stem-group fossil species with examples from freshwater fishes. *Systematic Biology* **41**(4):462-470.

**Wilson, M. V. H., Brinkman, D. B., & Neuman, A. G. 1992.** Cretaceous Esocoidei (Teleostei): early radiation of the pikes in North American fresh waters. *J. Paleontol.*, **66**(5):839-846.

**Wilson, M. V. H. & Murray, A. M. In press.** Early Cenomanian acanthomorph teleost in the Cretaceous Fish Scale Zone, Albian/Cenomanian boundary, Alberta, Canada. *In: Proc. Sympos. Mesozoic Fishes - Systematics and Paleoecology. Edited by G. Arratia and G. Viohl.*

**Wilson, M. V. H. & Williams, R. R. G. 1992.** Phylogenetic, biogeographic, and ecological significance of early fossil records of North American freshwater teleostean fishes. Pp. 224-244. *In: Systematics, Historical*

*Ecology, and North American Freshwater Fishes. Edited by R. L. Mayden. Stanford Univ. Press, 969 pp. ■*

## More Editorial Policy and Questions

Here are some options for the newsletter:

- The list of current publications can take up a lot of space. Already we have had to omit abstracts and all papers published before 1992. We could provide an electronic file of references built from submissions provided by readers, accessible over Internet using tools such as Gopher and Fetch. I maintain a database in EndNote Plus, but it could be exported to ProCite format and made available electronically. Interested?
- Lists of addresses of researchers need only be updated periodically or if there are changes. For now, people not previously listed should provide full data; others list what is new.
- Should readers contribute to the cost? This will be necessary if the newsletter grows. At the moment, cost is less than U.S. \$5. per issue, including printing, postage, and casual staff time. For the time being, contributions will be optional.