

The University of Alberta Entomology Virtual Museum

Felix Sperling

Professor - Dept. of Biological Sciences

Chair - U. of Alberta Collections Committee

Entomology Collection

>> search



Welcome to the searchable database of the
E.H. Strickland Entomological Museum
of the **Department of Biological Sciences**
at the **University of Alberta.**

Enter



<http://www.entomology.ualberta.ca/>



[HOME](#) | [FEEDBACK](#) | [HELP](#) | [LINKS](#) | [SEARCH](#) | [SITE MAP](#)

Department of Museums and Collections Services

► **Intro**

[► ABOUT US](#)[► COLLECTIONS POLICY](#)[► DIGITIZING COLLECTIONS](#)[► FOR CURATORS](#)

The Department of Museums and Collections Services is the central source of information, services and programs related the University of Alberta Museums. Our staff members provide professional museum expertise to the faculty and staff who maintain the University's museums and collections, and to the museum community in general. As part of this mandate, we provide advisory services and training in exhibitions, public programs, collections management, and conservation issues. We develop policies and procedures to assist the University's museums and collections, and are a liaison between the collections on campus and the broader community.



Edmonton, Alberta, Canada



© 2001 Museums and Collections Services



HOME | FEEDBACK | HELP | LINKS | SEARCH | SITE
MAP



► Explore our Collections

► MULTIMEDIA

► SEARCHABLE DATABASES



Dig into our collections and experience some of the fascinating 17 million objects held by the University of Alberta Museums.

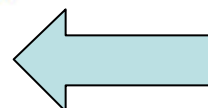
Reaching back to prehistoric times and spanning the globe, our 35 collections represent an exceptional range of disciplines. Whether you explore the natural world or human culture, delve into your options for discovery - visit the marvels of a collection, interact with intriguing three-dimensional objects or search a collection database. The avenues for discovery are limitless.

► Human History

- Art, Culture and History
- Medicine and Technology

► Natural History

- The Animal Kingdom
- Fossils
- Plants and Fungi
- Earth Sciences



Entomology Collection

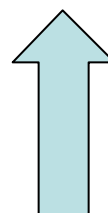
>> search



Welcome to the searchable database of the
E.H. Strickland Entomological Museum
of the **Department of Biological Sciences**
at the **University of Alberta.**



Enter



Entomology Collection

[Intro Page](#) [Search the Collection](#) [Browse the Collection](#)[Site Info](#) [Links](#) [Contact Us](#)

Search the Collection

:: Specimen Search

Search thousands of individual specimens held in the Museum's online database.

[scientific name](#) or common name

[collector](#)

[locality collected](#)

[date range collected](#)

from to (year YYYY)

Add geographic search

[latitude](#)



[longitude](#)



[range](#)

0.25 degrees (15 minutes)



:: Species Search

Search hundreds of species pages. Similar to a naturalist's field guide, each page provides a description of the species, distribution and habitat information, and more, for many of the species that occur in Alberta.

[scientific name](#) or common name

[habitat](#)

[diet info](#)

:: Additional Searches

[Hierarchical Search](#)

[Fast Find](#)

[Search Help](#)

[First-Time User?](#)

Entomology Collection

[Intro Page](#) [Search the Collection](#) [Browse the Collection](#)[Site Info](#) [Links](#) [Contact Us](#)

Browse the Collection

Browse through hundreds of species pages by selecting one of the categories below.

☐☐ Coleoptera



Click Beetles
Ground Beetles
Metallic Wood Borers
Tiger Beetles

☐☐ Hemiptera

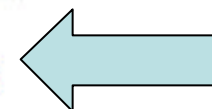


Shield-Backed Bugs

☐☐ Lepidoptera



Bombycid Moths
Butterflies and Skippers
Geometroid Moths
Noctuid Moths
Microlepidoptera
Pylaloid Moths

[Random Browse](#)[Browse Help](#)

☐☐ Plecoptera



Stoneflies

☐☐ Thysanoptera



Thrips

☐☐ Trichoptera



Caddisflies

Entomology Collection

[Intro Page](#) [Search the Collection](#) [Browse the Collection](#)

[Site Info](#) [Links](#) [Contact Us](#)

Browse the Collection

Butterflies and Skippers

Results Page: [1](#) [2](#) [3](#) [4](#) [5](#) [6](#) [Next](#)



Agriades glandon
Arctic Blue



Agriades glandon
Arctic Blue



Agriades glandon
Arctic Blue



Anthocharis stella
Stella Orangetip



Anthocharis stella
Stella Orangetip



Anthocharis stella
Stella Orangetip

[Site Info](#) [Links](#) [Contact Us](#)[browse search results](#) -> *Agriades glandon* -> **species page**

scientific name *Agrilades alandon* (de Prunner)

common name Arctic Blue

habitat

Alpine and subalpine meadows, sparsely vegetated grasslands and boreal sand dunes.

seasonality

One yearly flight in the mountains in July and August, and during June on the prairies.

identification

The only other Alberta blue with a large white patch (sometimes with a central black spot) in the middle of the hindwing underside is the Arrowhead Blue (*Glaucopsyche pliasus*), but the *Agriades* blues are smaller, lack a checkered wing fringe, and have black discal spots on the upperside. Subspecies *megalo* inhabits the mountains, and is darker overall with prominent underside black spots compared to the Rustic Blue (*A. glandon rusticus*) of the prairies and parkland. These two are most likely different species. Subspecies *lacustris* inhabits the Canadian Shield region in the far north, and is most similar to the mountain populations (contra Guppy & Shepard 2001). This group of blues has been the subject of much taxonomic debate over the years, and the correct names for our species are as yet unresolved; many names have been applied to this species (Kondla & Schmidt 1991), most recently treated as subspecies of *Agriades glandon* or *agulo* (Layberry et al. 1998, Opler 1999, Guppy & Shepard 2001), which were described from Europe. A growing body of evidence strongly suggests that there are at least two species here in Alberta, neither of which are the European *glandon* (C. Schmidt & N. Kondla, unpubl. data).

life history

No data available for Rocky Mountain populations. Hardy (1963) provides a description of some of the early stages from Vancouver Island, BC: the white egg is slightly flattened dorsoventrally, and second instar larvae are tan-coloured with faint subdorsal lines and a wine-coloured head. Adult males often congregate to sip moisture at damp earth along roadsides or mountain paths. Arctic Blues can be easy to miss because of their rapid flight close to the ground.

conservation

Not of concern.

diet info

The Arctic Blue lays eggs on Saxifrage (*Saxifraga bronchialis* and *S. tricuspidata*) in southwestern BC and the Yukon (Hardy 1963, Guppy & Shepard 2001). Adults will nectar on a variety of wildflowers.

range

Due to the unresolved taxonomy of this group, the range limits are not clear. The North American representatives of *Agrilades* blues, in one form or another, range from northern Alaska to Newfoundland and south to central Manitoba and south through the American west to New Mexico (Guppy & Shepard 2001).



Related Species Info

Authorship

Display Hierarchy

References

Specimen Info

There are 71 specimens of this species in the online database.

☐ Map Distribution

 Adult Seasonal Distribution

Specimen List

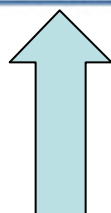
Entomology Collection

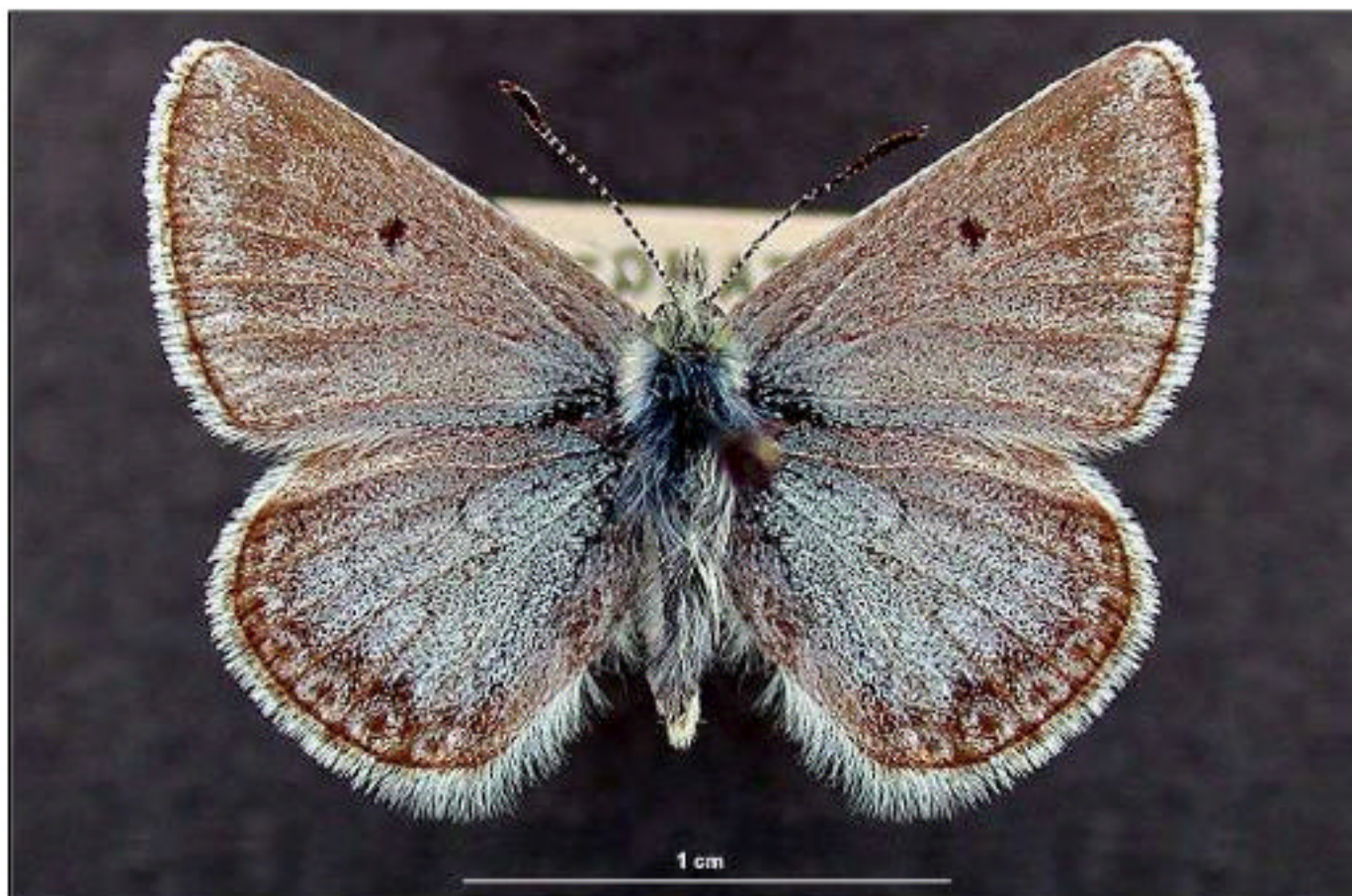
[Intro Page](#) [Search the Collection](#) [Browse the Collection](#)

[Site Info](#) [Links](#) [Contact Us](#)

Species Images

[browse](#) [search results](#) -> *Agrion glandon* -> [images](#)

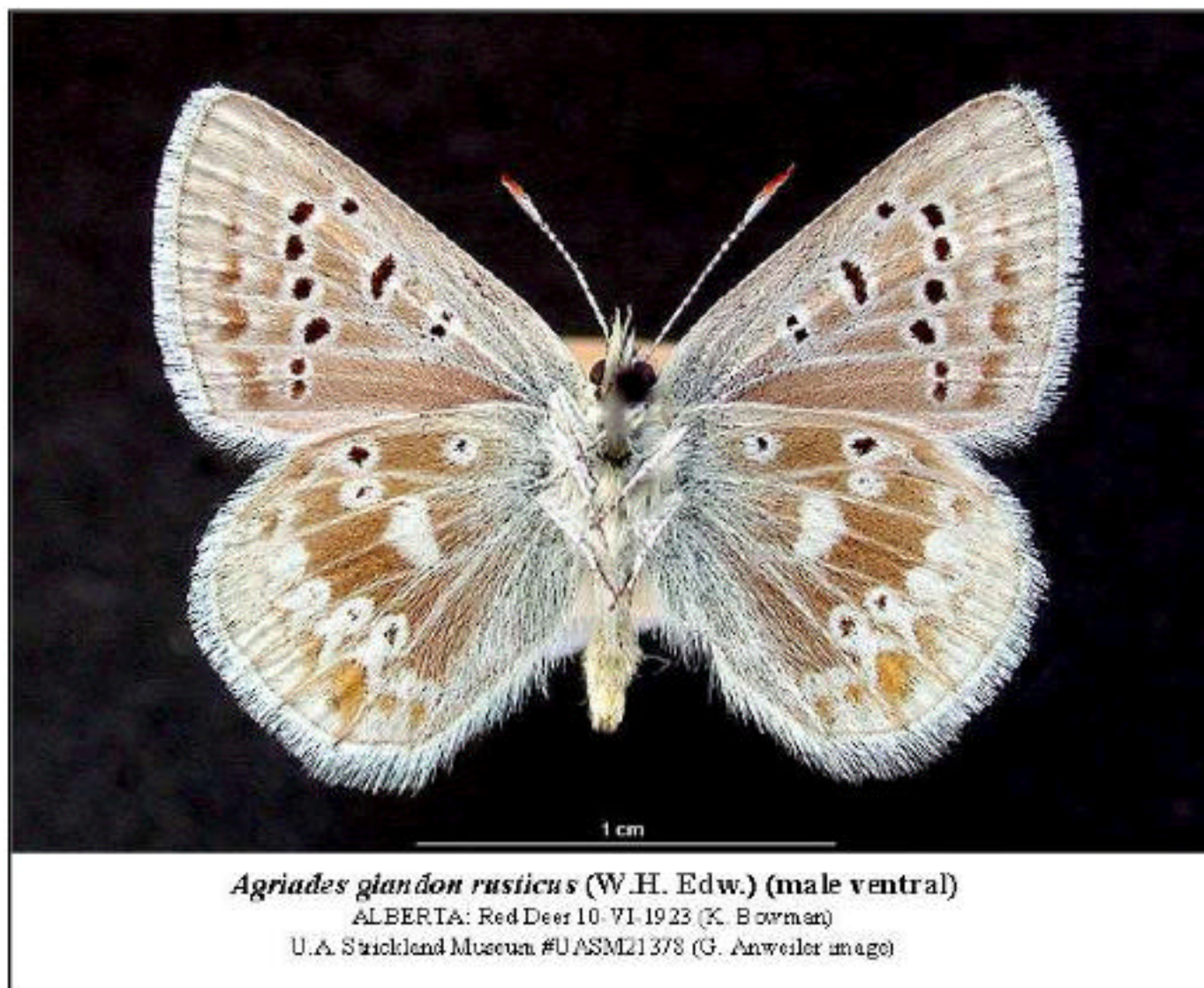


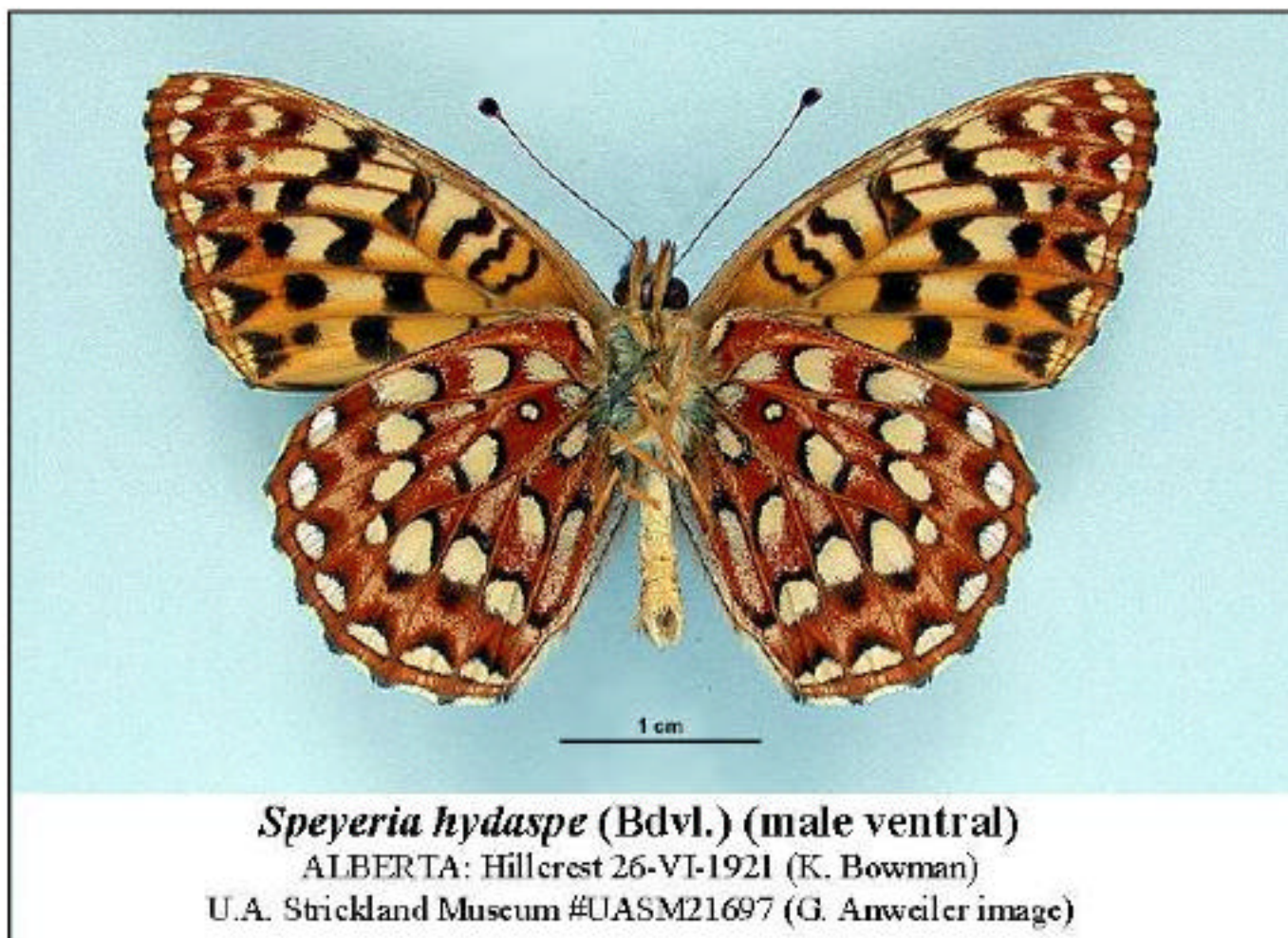


***Agriades glandon megalo* (McD.) (male dorsal)**

ALBERTA: Pocahontas 16-VI-1918 (K. Bowman)

U.A. Strickland Museum #UASM21397 (G. Anweiler image)





***Speyeria hydaspæ* (Bdvl.) (male ventral)**

ALBERTA: Hillcrest 26-VI-1921 (K. Bowman)

U.A. Strickland Museum #UASM21697 (G. Anweiler image)



Entomology Collection

[Intro Page](#) [Search the Collection](#) [Browse the Collection](#)

[Site Info](#) [Links](#) [Contact Us](#)

Species Page

[browse](#) [search](#) [results](#) -> *Agriades glandon* -> **species page**

scientific name *Agriades glandon* (de Prunner)

common name Arctic Blue

habitat

Alpine and subalpine meadows, sparsely vegetated grasslands and boreal sand dunes.

seasonality

One yearly flight in the mountains in July and August, and during June on the prairies.

identification

The only other Alberta blue with a large white patch (sometimes with a central black spot) in the middle of the hindwing underside is the Arrowhead Blue (*Glaucopsyche piasus*), but the *Agriades* blues are smaller, lack a checkered wing fringe, and have black discal spots on the upperside. Subspecies *megalo* inhabits the mountains, and is darker overall with prominent underside black spots compared to the Rustic Blue (*A. glandon rusticus*) of the prairies and parkland. These two are most likely different species. Subspecies *lacustris* inhabits the Canadian Shield region in the far north, and is most similar to the mountain populations (contra Guppy & Shepard 2001). This group of blues has been the subject of much taxonomic debate over the years, and the correct names for our species are as yet unresolved; many names have been applied to this species (Kondla & Schmidt 1991), most recently treated as subspecies of *Agriades glandon* or *aquilo* (Layberry et al. 1998, Opler 1999, Guppy & Shepard 2001), which were described from Europe. A growing body of evidence strongly suggests that there are at least two species here in Alberta, neither of which are the European *glandon* (C. Schmidt & N. Kondla, unpubl. data).

life history

No data available for Rocky Mountain populations. Hardy (1963) provides a description of some of the early stages from Vancouver Island, BC: the white egg is slightly flattened dorsoventrally, and second instar larvae are tan-coloured with faint subdorsal lines and a wine-coloured head. Adult males often congregate to sip moisture at damp earth along roadsides or mountain paths. Arctic Blues can be easy to miss because of their rapid flight close to the ground.

conservation

Not of concern.

diet info

The Arctic Blue lays eggs on Saxifrage (*Saxifraga bronchialis* and *S. tricuspidata*) in southwestern BC and the Yukon (Hardy 1963, Guppy & Shepard 2001). Adults will nectar on a variety of wildflowers.

range

Due to the unresolved taxonomy of this group, the range limits are not clear. The North American representatives of *Agriades* blues, in one form or another, range from northern Alaska to Newfoundland and south to central Manitoba and south through the American west to New Mexico (Guppy & Shepard 2001).

[CLICK TO ENLARGE](#)



[MORE IMAGES](#)

Related Species Info

[Authorship](#)

[Display Hierarchy](#)

[References](#)

Specimen Info

There are 71 specimens of this species in the online database

 [Map Distribution](#)

 [Adult Seasonal Distribution](#)

[Specimen List](#)

⚡ Authorship

name	role	date
Bird, C. D.	Species Page Author	2003-04
Schmidt, B. C.	Species Page Editor	2003-04-24

- ☐ Insecta
 - Order
 - ☐ Coleoptera
 - ☐ Hemiptera
 - ☐ Lepidoptera
 - Suborder
 - ☐ Ditrysia
 - Superfamily
 - ☐ Bombycoidea
 - ☐ Cossioidea
 - ☐ Drepanoidea
 - ☐ Geometroidea
 - ☐ Hesperioidea
 - ☐ Noctuoidea
 - ☐ Papilionoidea
 - Family
 - ☐ Danaidae
 - ☐ Lycaenidae
 - Subfamily
 - ☐ Eumaeinae
 - ☐ Lycaeninae
 - ☐ Polyommattinae
 - Genus
 - ☐ *Agriades*
 - Species
 - ☒ *glandon*
 - ☐ *rusticus*
 - ☐ *Celastrina*
 - ☐ *Euphilotes*
 - ☐ *Everes*
 - ☐ *Glaucopsyche*
 - ☐ *Icaricia*
 - ☐ *Lycaeides*
 - ☐ *Plebejus*
 - ☐ *Vacciniina*
 - ☐ *Theclinae*
 - ☐ *Nymphalidae*
 - ☐ *Papilionidae*
 - ☐ *Pieridae*
 - ☐ *Pterophoroidea*
 - ☐ *Pyraloidea*
 - ☐ *Sphingoidea*
 - ☐ *Exoporia*
 - ☐ *Plecoptera*
 - ☐ *Thysanoptera*
 - ☐ *Trichoptera*

Entomology Collection

[Intro Page](#) [Search the Collection](#) [Browse the Collection](#)

[Site Info](#) [Links](#) [Contact Us](#)

Species Page

[browse](#) [search](#) [results](#) -> *Agriades glandon* -> **species page**

scientific name *Agriades glandon* (de Prunner)

common name Arctic Blue

habitat

Alpine and subalpine meadows, sparsely vegetated grasslands and boreal sand dunes.

seasonality

One yearly flight in the mountains in July and August, and during June on the prairies.

identification

The only other Alberta blue with a large white patch (sometimes with a central black spot) in the middle of the hindwing underside is the Arrowhead Blue (*Glaucopsyche piasus*), but the *Agriades* blues are smaller, lack a checkered wing fringe, and have black discal spots on the upperside. Subspecies *megalo* inhabits the mountains, and is darker overall with prominent underside black spots compared to the Rustic Blue (*A. glandon rusticus*) of the prairies and parkland. These two are most likely different species. Subspecies *lacustris* inhabits the Canadian Shield region in the far north, and is most similar to the mountain populations (contra Guppy & Shepard 2001). This group of blues has been the subject of much taxonomic debate over the years, and the correct names for our species are as yet unresolved; many names have been applied to this species (Kondla & Schmidt 1991), most recently treated as subspecies of *Agriades glandon* or *aquila* (Layberry et al. 1998, Opler 1999, Guppy & Shepard 2001), which were described from Europe. A growing body of evidence strongly suggests that there are at least two species here in Alberta, neither of which are the European *glandon* (C. Schmidt & N. Kondla, unpubl. data).

life history

No data available for Rocky Mountain populations. Hardy (1963) provides a description of some of the early stages from Vancouver Island, BC: the white egg is slightly flattened dorsoventrally, and second instar larvae are tan-coloured with faint subdorsal lines and a wine-coloured head. Adult males often congregate to sip moisture at damp earth along roadsides or mountain paths. Arctic Blues can be easy to miss because of their rapid flight close to the ground.

conservation

Not of concern.

diet info

The Arctic Blue lays eggs on Saxifrage (*Saxifraga bronchialis* and *S. tricuspidata*) in southwestern BC and the Yukon (Hardy 1963, Guppy & Shepard 2001). Adults will nectar on a variety of wildflowers.

range

Due to the unresolved taxonomy of this group, the range limits are not clear. The North American representatives of *Agriades* blues, in one form or another, range from northern Alaska to Newfoundland and south to central Manitoba and south through the American west to New Mexico (Guppy & Shepard 2001).

CLICK TO ENLARGE



MORE IMAGES

Related Species Info

[Authorship](#)

[Display Hierarchy](#)

[References](#)

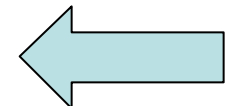
Specimen Info

There are 71 specimens of this species in the online database

[Map Distribution](#)

[Adult Seasonal Distribution](#)

[Specimen List](#)



Entomology Collection

[Intro Page](#) [Search the Collection](#) [Browse the Collection](#)

[Site Info](#) [Links](#) [Contact Us](#)

Species Page

[browse search results](#) -> *Agrion* *glandon* -> **species page**

scientific name *Agriades glandon* (de Prunner)

common name Arctic Blue

habitat

Alpine and subalpine meadows, sparsely vegetated grasslands and boreal sand dunes.

seasonality

One yearly flight in the mountains in July and August, and during June on the prairies.

identification

The only other Alberta blue with a large white patch (sometimes with a central black spot) in the middle of the hindwing underside is the Arrowhead Blue (*Glaucopsyche piasus*), but the *Agriades* blues are smaller, lack a checkered wing fringe, and have black discal spots on the upperside. Subspecies *megalo* inhabits the mountains, and is darker overall with prominent underside black spots compared to the Rustic Blue (*A. glandon rusticus*) of the prairies and parkland. These two are most likely different species. Subspecies *lacustris* inhabits the Canadian Shield region in the far north, and is most similar to the mountain populations (contra Guppy & Shepard 2001). This group of blues has been the subject of much taxonomic debate over the years, and the correct names for our species are as yet unresolved; many names have been applied to this species (Kondia & Schmidt 1991), most recently treated as subspecies of *Agriades glandon* or *aquila* (Layberry et al. 1998, Opler 1999, Guppy & Shepard 2001), which were described from Europe. A growing body of evidence strongly suggests that there are at least two species here in Alberta, neither of which are the European *glandon* (C. Schmidt & N. Kondia, unpubl. data).

life history

No data available for Rocky Mountain populations. Hardy (1963) provides a description of some of the early stages from Vancouver Island, BC: the white egg is slightly flattened dorsoventrally, and second instar larvae are tan-coloured with faint subdorsal lines and a wine-coloured head. Adult males often congregate to sip moisture at damp earth along roadsides or mountain paths. Arctic Blues can be easy to miss because of their rapid flight close to the ground.

conservation

Not of concern.

diet info

The Arctic Blue lays eggs on Saxifrage (*Saxifraga bronchialis* and *S. tricuspidata*) in southwestern BC and the Yukon (Hardy 1963, Guppy & Shepard 2001). Adults will nectar on a variety of wildflowers.

range

Due to the unresolved taxonomy of this group, the range limits are not clear. The North American representatives of *Agrilades* blues, in one form or another, range from northern Alaska to Newfoundland and south to central Manitoba and south through the American west to New Mexico (Guppy & Shepard 2001).

[CLICK TO ENLARGE](#)

[MORE IMAGES](#)

Related Species Info

Authorship

Display Hierarchy

References

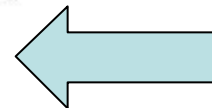
Specimen Info

There are 71 specimens of this species in the online database

☐ Map Distribution

 Adult Seasonal Distribution

Specimen List



Entomology Collection

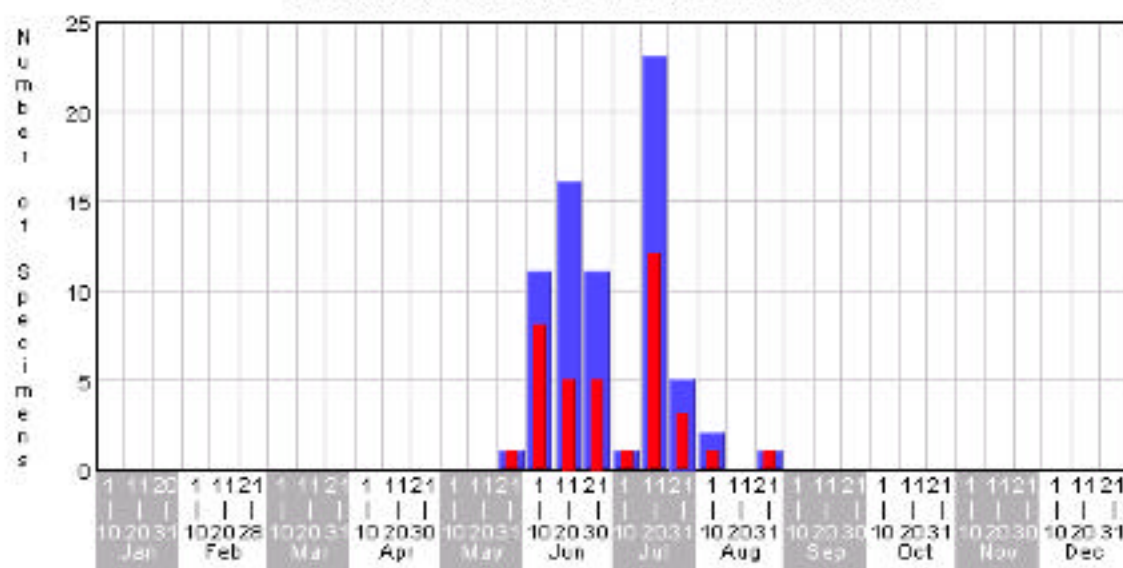
[Intro Page](#) [Search the Collection](#) [Browse the Collection](#)

[Site Info](#) [Links](#) [Contact Us](#)

Adult Seasonal Distribution

[browse search results](#) -> *Agriades glandon* -> **adult seasonal distribution**

SEASONAL DISTRIBUTION OF ADULT COLLECTION RECORDS



Blue bar represents all specimens collected within a specified date range.

Red bar also represents specimens collected within a specified date range but specimens collected at the same date and location are counted as one specimen.

Entomology Collection

[Intro Page](#) [Search the Collection](#) [Browse the Collection](#)

[Site Info](#) [Links](#) [Contact Us](#)

Specimen List

[browse search results](#) -> [Agriades glandon](#) -> [specimen list](#)

order: Lepidoptera
scientific name: *Agriades glandon*
common name: Arctic Blue

no. of Specimens: **1** to **20** of **71**

| sample # | sex | life stage | date collected | locality | collection |
|---------------------------|-----|------------|----------------|------------------------------|-----------------|
| UASM21370 | | adult | 1923-06-06 | Canada; Alberta, Red Deer | UASM COLLECTION |
| UASM21371 | | adult | 1924-05-29 | Canada; Alberta, Red Deer | UASM COLLECTION |
| UASM21372 | | adult | 1922-06-11 | Canada; Alberta, Red Deer | UASM COLLECTION |
| UASM21373 | | adult | 1924-06-17 | Canada; Alberta, Red Deer | UASM COLLECTION |
| UASM21374 | | adult | 1922-06-11 | Canada; Alberta, Red Deer | UASM COLLECTION |
| UASM21375 | | adult | 1922-06-11 | Canada; Alberta, Red Deer | UASM COLLECTION |
| UASM21376 | | adult | 1922-06-11 | Canada; Alberta, Red Deer | UASM COLLECTION |
| UASM21377 | | adult | 1923-06-08 | Canada; Alberta, Red Deer | UASM COLLECTION |
| UASM21378 | | adult | 1923-06-10 | Canada; Alberta, Red Deer | UASM COLLECTION |
| UASM21379 | | adult | 1915-06-23 | Canada; Alberta, Calgary | UASM COLLECTION |
| UASM21380 | | adult | 1915-06-23 | Canada; Alberta, Calgary | UASM COLLECTION |
| UASM21381 | | adult | 1915-06-23 | Canada; Alberta, Calgary | UASM COLLECTION |
| UASM21382 | | adult | 1922-06-10 | Canada; Alberta, Calgary | UASM COLLECTION |
| UASM21383 | | adult | 1915-06-23 | Canada; Alberta, Calgary | UASM COLLECTION |
| UASM21384 | | adult | 1922-06-10 | Canada; Alberta, Calgary | UASM COLLECTION |
| UASM21385 | | adult | 1922-06-11 | Canada; Alberta, Red Deer | UASM COLLECTION |
| UASM21386 | | ad | 1923-06-07 | Canada; Alberta, Red Deer | UASM COLLECTION |
| UASM21387 | | ad | 1922-06-11 | Canada; Alberta, Red Deer | UASM COLLECTION |
| UASM21388 | | ad | 1924-06-15 | Canada; Alberta, Beaverlodge | UASM COLLECTION |
| UASM21389 | | s | 1924-06-08 | Canada; Alberta, Beaverlodge | UASM COLLECTION |

Results Page: [1](#) [2](#) [3](#) [4](#) [Next](#)

Entomology Collection

[Intro Page](#) [Search the Collection](#) [Browse the Collection](#)

[Site Info](#) [Links](#) [Contact Us](#)

Specimen List

[browse](#) [search results](#) -> [Agriades glandon](#) -> **specimen list**

order: Lepidoptera
scientific name: [Agriades glandon](#)
common name: Arctic Blue

no. of Specimens **61** to **71** of **71**

| sample # | sex | life stage | date collected | locality | collection |
|---------------------------|--------|------------|----------------|--|-----------------|
| UASM24131 | | adult | 1992-06-27 | Canada; Alberta, Hailstone Butte (Hwy. 532) | UASM COLLECTION |
| UASM25249 | female | | 1992-06-21 | Canada; Alberta, Kananaskis, Priddis (24km WSW, gas plant 1.6km NE Mt. Barwell summit) | UASM COLLECTION |
| UASM25250 | female | | 1990-07-23 | Canada; Alberta, Kananaskis, Plateau Mtn. (summit) | UASM COLLECTION |
| UASM25251 | female | | 1983-07-04 | Canada; Alberta, Kananaskis, Mt. Allen (summit) | UASM COLLECTION |
| UASM25252 | female | | 1981-08-09 | Canada; Alberta, Banff National Park, Canmore (east gate (Hwy. 1 near)) | UASM COLLECTION |
| UASM25253 | male | | 1983-08-22 | Canada; Alberta, Kananaskis, Chester Lake | UASM COLLECTION |
| UASM25254 | male | | 1981-08-09 | Canada; Alberta, Banff National Park, Canmore (east gate (Hwy. 1 near)) | UASM COLLECTION |
| UASM25255 | male | | 1984-07-20 | Canada; Alberta, Sundre (45km WSW, Forestry Trunk Rd. at Red Deer River) | UASM COLLECTION |
| UASM25256 | male | | 1992-07-11 | Canada; Alberta, Kananaskis, Hailstone Butte (Hwy 532 near Hwy 940) | UASM COLLECTION |
| UASM25257 | male | | 1992-07-11 | Canada; Alberta, Kananaskis, Hailstone Butte (Hwy 532 near Hwy 940) | UASM COLLECTION |
| UASM25258 | male | | 1998-07-18 | Canada; Alberta, Grande Cache (8km WNW, Mt. Stearn) | UASM COLLECTION |

Results Page: [Previous](#) [1](#) [2](#) [3](#) [4](#)

Entomology Collection

[Intro Page](#) [Search the Collection](#) [Browse the Collection](#)[Site Info](#) [Links](#) [Contact Us](#)

Specimen Details

[browse search results](#) -> [Agriades glandon specimen list](#) -> **specimen details**[previous or next specimen](#)  11/11Sample # : **UASM25258**

| | |
|-----------------------|---|
| order | Lepidoptera |
| scientific name | <i>Agriades glandon</i> |
| common name | Arctic Blue |
| taxonomic catalogue # | MONA No. 4384.1 |
| sex | male |
| locality | Canada; Alberta, Grande Cache (8km WNW, Mt. Stearn) |
| latitude/longitude. | 53.862 N 119.226 W |
| date collected | 1998-07-18 |
| collector | Lawrie, D. |
| additional notes | ssp. megalo (McDunnough) |
| data entry | Ross, A. |

Entomology Collection

[Intro Page](#) [Search the Collection](#) [Browse the Collection](#)[Site Info](#) [Links](#) [Contact Us](#)

Search the Collection

Specimen Search

Search thousands of individual specimens held in the Museum's online database.



[scientific name](#) or common name

[collector](#)

[locality collected](#)

[date range collected](#)

from to (year YYYY)

Add geographic search

[latitude](#)



[longitude](#)



[range](#)

0.25 degrees (15 minutes)



Species Search

Search hundreds of species pages. Similar to a naturalist's field guide, each page provides a description of the species, distribution and habitat information, and more, for many of the species that occur in Alberta.

[scientific name](#) or common name

[habitat](#)

[diet info](#)

Additional Searches

[Hierarchical Search](#)

[Fast Find](#)

[Search Help](#)

[First-Time User?](#)

SCIENTIFIC NAME List [A]

Click on SCIENTIFIC NAME to automatically paste in search box.

A B C D E F G H I J K L M N O P Q R S T U V W X Y Z

Abagrotis alternata
 Abagrotis brunneipennis
 Abagrotis cupida
 Abagrotis discoidalis
 Abagrotis duanca
 Abagrotis erratica
 Abagrotis hermina
 Abagrotis nanalis
 Abagrotis orbis
 Abagrotis placida
 Abagrotis reedi
 Abagrotis trigona
 Abagrotis variata
 Abagrotis vittifrons
 Abrostola urentis
 Acasis viridata
 Acentria ephemerella
 Acigona comptulatis
 Acopa perpallida
 Acossus centerensis
 Acossus populi
 Acronicta americana
 Acronicta dactylina
 Acronicta fragilis
 Acronicta grisea
 Acronicta hasta
 Acronicta impleta
 Acronicta impressa
 Acronicta innotata
 Acronicta lepusculina
 Acronicta mansueta
 Acronicta oblinita
 Acronicta quadrata
 Acronicta radcliffei
 Acronicta sperata
 Acronicta superans
 Acronicta vulpina
 Actebia fennica
 Adita chionanthi
 Aeolothrips auricestus
 Aeolothrips clarus
 Aeolothrips duvalli
 Aeolothrips fasciapennis
 Aeolothrips fasciatus
 Aeolothrips fasciatus complex
 Aeolothrips hartleyi
 Aeolothrips hartleyi complex
 Aeolothrips intermedius
 Aeolothrips melaleucus
 Aeolothrips montanus
 Aeolothrips nasturtii
 Aeolothrips near duvalli
 Aeolothrips near fasciatus
 Aeolothrips near intermedius
 Aeolothrips near melaleucus
 Aeolothrips near nasturtii
 Aeolothrips oregonus
 Aeolothrips sp.
 Aeolothrips terrestris
 Aeolus mellililus
 Aethalura intertexta fumata
 Afotella cylindrica
 Agnorisma bugrai

COLLECTOR List [A]

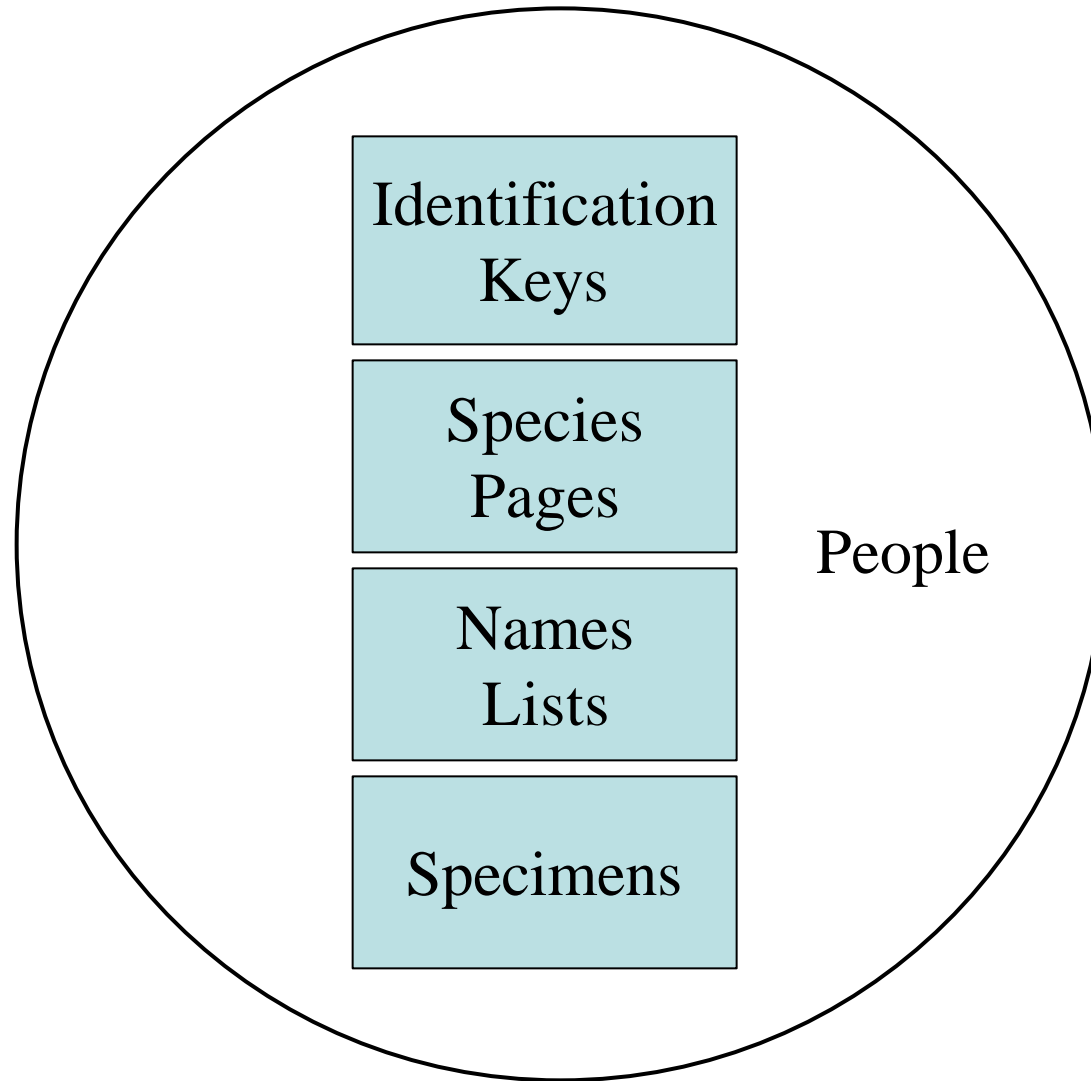
Click on COLLECTOR to automatically paste in search box.

A B C D E F G H I J K L M N O P Q R S T U V W X Y Z

Acorn, J. H.
 Adamski, Y. S.
 Adisoemarto, T.
 Aiken, R.
 Aitcheson, R.
 Alberta Fish and Wildlife
 Allen, R. T.
 Anderson, R. L.
 Anderson, R. S.
 Anweiler, G. G.
 Armstrong, T.
 Askevold, I. S.
 Avery, Ken
 Awram, J.

Utility of the University of Alberta Virtual Museum:

1. Endangered species -
e.g. yucca moth community near Onefour, Alberta
2. Historical analysis
e.g. George Salt as a young man
3. Climate change
e.g. “new” dryland skippers in southern Alberta
4. Independent source of information
e.g. Butterflies of Canada site





The Alberta Lepidopterists' Guild



Papilio zelicaon



Leucoma salix



Limnacia phragmitella



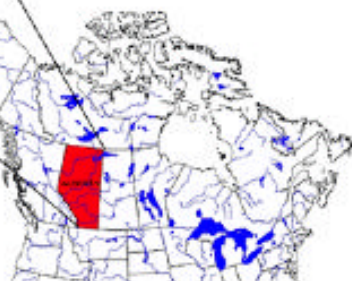
Hamelaucis nevadensis

The Alberta Lepidopterists' Guild (ALG) is a non-profit society made up of amateur and professional Lepidopterists. Our objective is to support and encourage the study and appreciation of Alberta Lepidoptera (butterflies and moths). We coordinate research projects, facilitate the exchange of information among members, and host events where people can collect and look at Lepidoptera and exchange information and ideas. We have an elected executive, and hold at least one annual general meeting to handle society business. We also host a members-only electronic bulletin board, and numerous scientific and social events throughout the province.

Alberta is a province in western Canada which includes a diverse range of habitats, including mountains, boreal forest, and prairie. Over 3000 species of butterflies and moths are thought to live here; so far about three-quarters of these are known.



The Province of Alberta



Recent News & Updates

New checklist of Microlepidoptera of North America

Learn More

ALG hosts the 54th Annual Meeting of the Lepidopterists' Society, Olds, AB
July 23-26

Learn More

Build Your Own UV Trap

Learn More

Contact Information

To contact us, you can reach the Secretary/
Treasurer at:

gpohl[at]nrcan.gc.ca
(note spam avoidance: replace the "[at]"
above with "@")

daytime phone: (780) 435-7211

Featured Lep of the Season



Click to Enlarge

This image of a thyridid moth (*Thyris maculata* Harris) was taken by John Acorn near Medicine Hat. It is the first known report of this tiny but beautiful moth, and the first record of this family (Thyrididae - the window-winged moths) for Alberta.



About Us

The Alberta Lepidopterists' Guild

was formally inaugurated on October 16, 1999 at Olds College, Alberta. Gary Anweiler, who sowed the seeds for ALG, was our founding president. The initial group of 16 people comprised a mixture of amateur and professional entomologists with a particular interest in Lepidoptera, or with a willingness to encourage and support those of us who do. Since that time the group has almost tripled in size, including members from adjacent areas. Our membership includes all the authors of the popular guidebooks "Alberta Butterflies" and "Butterflies of Alberta". Most active members

of ALG are concentrating on the Alberta moth fauna, which is poorly known in comparison to the butterflies. New technology such as mini-generators, low-cost ultraviolet and mercury vapor bulbs, flatbed scanners and the internet, has fueled a resurgence of interest in the moth fauna by making it much easier to collect and identify specimens.



Besides that collection, ALG members curate major institutional collections at the [Canadian Forest Service lab in Edmonton](#), and at Olds College near Calgary. A new checklist of AB Lepidoptera is also in the works, to replace Ken Bowman's 1951 list.

Our members are involved in a number of Lepidoptera-related projects. Since Felix Sperling returned to the University of Alberta as a professor in 1999, he has given a major boost to ALG by revitalizing the historical Bowman Lepidoptera Collection. He has also initiated the [Virtual Museum Project](#), which hosts a growing number of species pages on Alberta Lepidoptera.



Quick Links

Search the Entomology Collection from the University of Alberta Strickland Museum

[:: Learn More ::](#)

Arthropod Collection at the Northern Forestry Centre

[:: Learn More ::](#)

Alberta Butterfly Counts

[:: Learn More ::](#)

Our Executive

President:

[Chris Schmidt](#)

Vice President:

[Felix Sperling](#)

Secretary/Treasurer:

[Greg Pohl](#)

Directors:

[John Acorn](#)

[Gary Anweiler](#)

[Charley Bird](#)

[Doug Macaulay](#)

[Ernest Mengersen](#)



The Alberta Lepidopterists' Guild



» AB Leps :: New Checklist :: Moth Survey :: Faunal Inventory :: NABA Butterfly Counts

Projects

The ALG has several Lepidoptera projects on the go. To keep bureaucracy to a minimum, these projects are typically initiated and carried out by individual members, with ALG providing logistical and technical support.

- [AB Lepidoptera Species Pages](#)
- [New Checklist of AB Lepidoptera](#)
- [AB Moth Survey](#)
- [Faunal Inventory Projects](#)
- [NABA Butterfly Counts](#)



Projects

- [AB Lepidoptera Species Pages](#)
- [New Checklist of AB Lepidoptera](#)
- [AB Moth Survey](#)
- [Faunal Inventory Projects](#)
- [NABA Butterfly Counts](#)

Downloads

- [Boreal Shield Report 2000](#) (PDF)
- [Boreal Shield Report 2000 Data](#) (PDF)
- [Boreal Shield Report 2001](#) (PDF)
- [Boreal Shield Report 2001 App 1](#) (PDF)
- [Boreal Shield Report 2001 App 2](#) (PDF)

*The Alberta Lepidopterists' Guild*

News & Events

[» Upcoming Events](#) :: [Field Trip Reports](#) :: [News Archive](#)

News & Events

2003**Feb. 15****The Feralia Festival, Edmonton**

Join in the tradition as ALG revives this ancient festival. Originally intended to celebrate our ancestors, ALG celebrates Feralia by heralding the impending return of spring moths, including early-flying noctuid moths of the genus *Feralia*. Join the fun at this pot-luck social! This year we plan to meet for an afternoon of informal talks with a group of bat researchers as well. Check this site for details as they're worked out.

July 23-26**54th Annual Meeting of the Lepidopterists' Society, Olds, AB**

ALG will be hosting the 54th Annual Meeting of the Lepidopterists' Society in 2003. The meeting will be held July 23-26, 2003 (Wednesday through Sunday) on the campus of Olds College in Olds Alberta, approximately 50 miles north of Calgary. Local hosts of the meeting are Ernest Mengersen (Olds College) and the Alberta Lepidopterists' Guild. The Lepidopterists' Society is an international society with members all over the world. They will be joining ALG members in Olds for an exciting program of scientific talks and field trips.

October 2-4**51st annual meeting of the Entomological Society of Alberta, Athabasca, AB**

Check out the [ESAB home page](#) for details.

Add an Event

If you would like to host an ALG event, send details to Greg Pohl at [gpohl\[at\]nrcan.gc.ca](mailto:gpohl[at]nrcan.gc.ca) and we'll post it here.

Links

» [Entomological Society of Alberta \(ESAB\)](#)