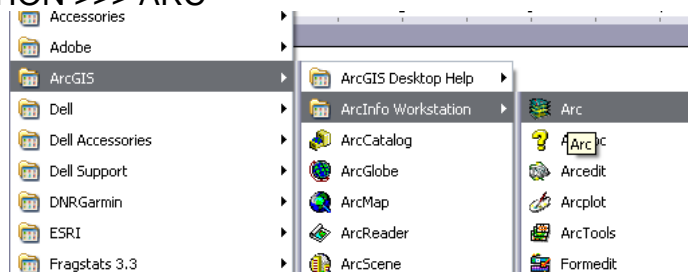


How to Run the Topographic AMLs: CTI, TRI

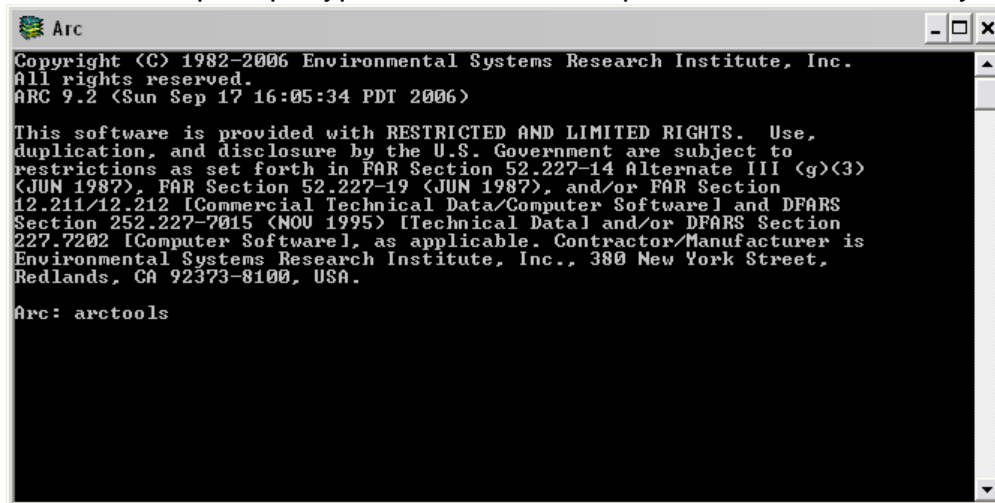
NOTE: Right-click on each *.aml file and click OPEN using NOTEPAD (make sure to uncheck the 'Always use...' box!) – There is typically usage information contained in the comments section up front of the file. Close the file when finished viewing and ready to run your data.

1. Click START MENU >>> PROGRAMS >>> ARCGIS >>>> ARCINFO WORKSTATION >>> ARC

Start the program



2. At the command prompt, type 'arctools' and press ENTER on the keyboard

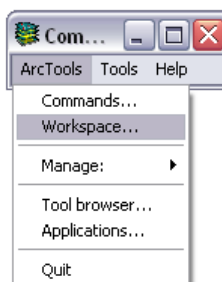


3. Select 'Command Tools' and click OK

Set the working directory



4. Choose ARCTOOLS >>> WORKSPACE...



5. Select your directory folder containing the AMLs and grids and click OK

6. Choose ARCTOOLS >>> QUIT

7. Click QUIT again

8. At the command prompt, type **grid**

 A screenshot of the Arc command prompt window. The text displayed is:


```

All rights reserved.
ARC 9.2 (Sun Sep 17 16:05:34 PDT 2006)

This software is provided with RESTRICTED AND LIMITED RIGHTS. Use,
duplication, and disclosure by the U.S. Government are subject to
restrictions as set forth in FAR Section 52.227-14 Alternate III (g)(3)
(JUN 1987), FAR Section 52.227-19 (JUN 1987), and/or FAR Section
12.211/12.212 [Commercial Technical Data/Computer Software] and DFARS
Section 252.227-7015 (NOV 1995) [Technical Data and/or DFARS Section
227.7202 [Computer Software], as applicable. Contractor/Manufacturer is
Environmental Systems Research Institute, Inc., 380 New York Street,
Redlands, CA 92373-8100, USA.

Arc: arctools

Starting ArcTools...
ArcTools 9.2
Setting terminal type to 9999
Setting Master preferences (c:\arcgis\arcexe9x\arctools\sysfiles\atprefs)
Arc: grid
Copyright (C) 1982-2006 Environmental Systems Research Institute, Inc.
All rights reserved.
GRID 9.2 (Sun Sep 17 16:05:34 PDT 2006)

Grid:
  
```

Run AML

9. Type **&run cti** and press ENTER

10. The command prompt will indicate the "usage" for the AML:

Usage: CTI <DEM> <OUTGRID>

11. Therefore, type **&run cti yourDEMnamehere yourOUTPUTnamehere** and press ENTER on the keyboard

AML Sources

CTI: <http://arcscripts.esri.com/details.asp?dbid=11863>

TRI: <http://arcscripts.esri.com/details.asp?dbid=12435>